



**EVO II** \$1495.00



**EVO II Dual** (Call for price)



**EVO II Pro** \$1795.00

The EVO™ II series aircraft are designed with the professional user in mind. Ultra-fast deployment™ global broadcast\* of live imagery, high resolution 3D mapping, or capturing thermal images are the mission requirement, the EVO™ II series meet the need.

Included with EVO II series is a smart controller featuring a built-in 3.3-inch OLED display, eliminating the need for a mobile device\*\*. With a four-hour battery life and an ergonomic, compact design, the remote is lightweight and comfortable.

Available in Rugged Bundles with all accessories, or boxed for retail shelf display (accessories separate), the EVO II is ready to fly in any commercial application. Images from the EVO II series are compatible with all photogrammetry and civil software tools, offering RAW and .jpg file formats embedded with geo-location metadata. The EVO II Dual also embeds geo-location data in thermal images, allowing for thermal mapping.



The four-hour battery-powered Autel LiveDeck enables streaming video to anywhere via USB, LAN port, or HDMI outputs.

\*LiveDeck required for streaming

\*\*Mobile device required for mission planning.



## FEATURES



Adjustable aperture  
from f/2.8-f/11



Captures high dynamic  
range 20MP stills



Flight times up  
to 40 minutes



2.4Ghz antennas for  
up to a 9km range and  
better reception  
in urban areas



Allows for the camera  
to be interchanged  
without replacing the  
entire system



12 image sensors  
create a 3D world  
for omnidirectional  
obstacle avoidance

## TYPES OF USE



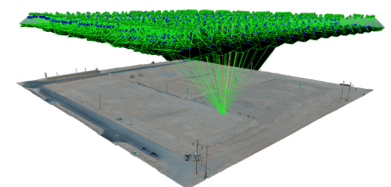
### PUBLIC SAFETY

Police and fire agencies appreciate the Autel EVO™ II series aircraft for its deployment speed, security of data, and no flight restrictions embedded in the aircraft. The Dual payload is created for public safety and inspection purposes, with high quality images in no-light scenarios. The 40 minute flight time reduces downtime. Combined with the Autel LiveDeck™, video may be streamed for situational awareness or command authority involvement.



### INSPECTION

With EVO II Pro, inspection images are more crisp and clear than any other in-class aircraft. The 3X lossless zoom allows the sensor a safe standoff distance while capturing sharp, detailed imagery via the 1" camera. Collecting visual data on an vertical asset provides greater safety, accessibility, and measurability of tower inventory and condition. The high-wind capability of the EVO II offers confidence in challenging environments.



### MAPPING

Featuring a Sony 6K 1-inch sensor, EVO II Pro provides data-rich images and metadata compatible with all common mapping and civil software suites. The manually controlled aperture, shutter speed, ISO, and white balance enable pilots to compensate for lighting challenges in the field. Autel Explorer provides automated flight tools and control for precision mapping with camera control, recallable missions, waypoint flight, and automated control for mapping of vertical and horizontal objects.

AIRCRAFT

Takeoff Weight	2.5 - 2.6 lbs	
Max Payload (camera attached)	2 lbs	
Folded Dimensions	L 9 x W 4.6 x H 4.4 in	
Max Speed	Standard: 33.6 mph	Ludicrous: 45 mph
Max Service Ceiling	4.35 miles (22,968 ft)	
Max Flight Time	Hover: 35min	Moving: 40min
Transmission Type	FCC: 2.4GHz ALink	
Max Transmission Distance	5.6 miles (29,528 ft)	
Storage	Internal: 8GB	Max SD: 128GB
Battery Type	LiPo 3s	
Battery Size	7,100mAh	
Controller Screen	3.3in OLED 330 Nits	
Controller Battery	5,000 mAh	

SENSING SYSTEM

Sensing Type	12 Omnidirectional computer vision sensors	
Detection Range	Forward: 1.62 - 131 feet Backward: 1.62 - 105 feet Upward: 1.62 - 79 feet	Downward: 1.62 - 72 feet Sides: 1.62 - 79 feet
FOV	Forward: Horizontal 60° / Vertical 80° Backward: Horizontal 60° / Vertical 80° Upward: Horizontal 60° / Vertical 50° Downward: Horizontal 60° / Vertical 50°	

CAMERA PAYLOADS

	EVO II 8K	EVO II Pro 6K	EVO II Dual
Sensor	Sony IMX586	Sony IMX383	FLIR Boson + Sony IMX586
Max Resolution	Stills: 8,000 x 6,000 px Video: 7,680 x 4,320 px	Stills: 5,472 x 3,648 px Video: 5,472 x 3,076 px	Stills: 8,000 x 6,000 px IR: 640 x 512 px
Format	MOV/MP4	MOV/MP4	MOV/MP4
Codec	H.264/H.265	H.264/H.265	H.264/H.265
HDR Support	Yes	Yes	Yes
AF Support	Yes	Yes	Yes
Defog	Yes	Yes	Yes (8k camera only)
Histogram	Yes	Yes	Yes (8k camera only)
10-Bit Log	Yes	Yes	Yes (8k camera only)
Aperture	f1.8	f2.8-f/11	f1.8 (8k camera only)
Zoom	1-8x (4x lossless)	1-8x (3x lossless)	1-8x (4x lossless)
ISO Range	Video: 100 - 3200 Photo: 100 - 3200	Video: 100 - 6400 Photo: 100 - 12800	Video: 100 - 3200 (8k camera only) Photo: 100 - 3200 (8k camera only)
Video Modes	8K / 25fps 4k / 60fps	6K / 30fps 4k / 60fps	8K / 25fps (8k camera only) 4k / 60fps (8k camera only) FLIR 640p / 30fps
Max Video Bitrate	120Mbps	120Mbps	120Mbps
Photo	48 MP	20 MP	48 MP (8k camera only)

AIRCRAFT

Takeoff Weight	2.5 - 2.6 lbs	
Max Payload (camera attached)	2 lbs	
Folded Dimensions	L 9 x W 4.6 x H 4.4 in	
Max Speed	Standard: 33.6 mph	Ludicrous: 45 mph
Max Service Ceiling	4.35 miles (22,968 ft)	
Max Flight Time	Hover: 35min	Moving: 40min
Transmission Type	FCC: 2.4GHz ALink	
Max Transmission Distance	5.6 miles (29,528 ft)	
Storage	Internal: 8GB	Max SD: 128GB
Battery Type	LiPo 3s	
Battery Size	7,100mAh	
Controller Screen	3.3in OLED 330 Nits	
Controller Battery	5,000 mAh	

SENSING SYSTEM

Sensing Type	12 Omnidirectional computer vision sensors	
Detection Range	Forward: 1.62 - 131 feet	Downward: 1.62 - 72 feet
	Backward: 1.62 - 105 feet	Sides: 1.62 - 79 feet
	Upward: 1.62 - 79 feet	
FOV	Forward: Horizontal 60° / Vertical 80° Backward: Horizontal 60° / Vertical 80° Upward: Horizontal 60° / Vertical 50° Downward: Horizontal 60° / Vertical 50°	

CAMERA PAYLOADS

	EVO II 8K	EVO II Pro 6K	EVO II Dual
Sensor	Sony IMX586	Sony IMX383	FLIR Boson + Sony IMX586
Max Resolution	Stills: 8,000 x 6,000 px Video: 7,680 x 4,320 px	Stills: 5,472 x 3,648 px Video: 5,472 x 3,076 px	Stills: 8,000 x 6,000 px IR: 640 x 512 px
Format	MOV/MP4	MOV/MP4	MOV/MP4
Codec	H.264/H.265	H.264/H.265	H.264/H.265
HDR Support	Yes	Yes	Yes
AF Support	Yes	Yes	Yes
Defog	Yes	Yes	Yes (8k camera only)
Histogram	Yes	Yes	Yes (8k camera only)
10-Bit Log	Yes	Yes	Yes (8k camera only)
Aperture	f1.8	f2.8-f/11	f1.8 (8k camera only)
Zoom	1-8x (4x lossless)	1-8x (3x lossless)	1-8x (4x lossless)
ISO Range	Video: 100 - 3200 Photo: 100 - 3200	Video: 100 - 6400 Photo: 100 - 12800	Video: 100 - 3200 (8k camera only) Photo: 100 - 3200 (8k camera only)
Video Modes	8K / 25fps 4k / 60fps	6K / 30fps 4k / 60fps	8K / 25fps (8k camera only) 4k / 60fps (8k camera only) FLIR 640p / 30fps
Max Video Bitrate	120Mbps	120Mbps	120Mbps
Photo	48 MP	20 MP	48 MP (8k camera only)

